

EXPEDITION: AWE AND WONDER – Mythical Plants



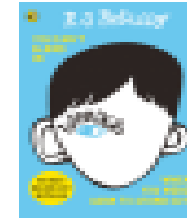
EXPEDITION OVERVIEW:

In this expedition, our reading and English lessons will be greatly inspired by our books and we'll focus on mythical creatures and plants to produce some wonderful creative writing.

During this term, we'll also be assessing and revisiting our previous topics to recap the children's key knowledge and understanding.

In addition to the expedition revisits, the children will be working scientifically to help expand their knowledge of plants and light. The children will learn about the functions of different parts of flowering plants. They will also work scientifically by looking for patterns in what happens to shadows when the light source moves or the distance between the light source and the object changes.

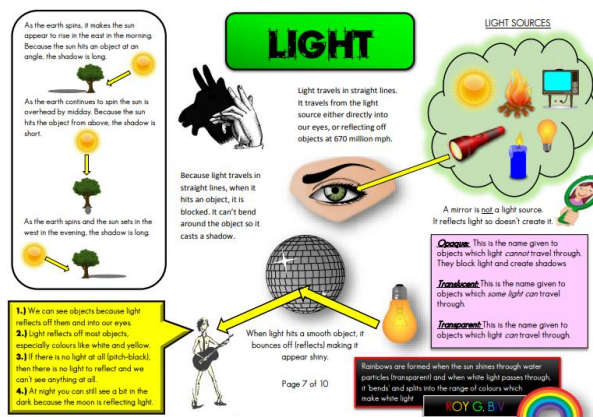
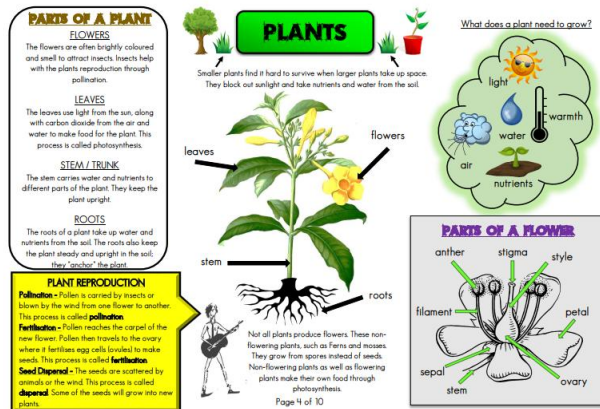
Books:



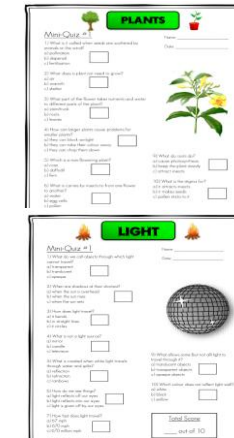
Wonder by R J Palacio

Tuesday by David Wiesner

Knowledge:



Assessment:



Science Knowledge

Plants - Key knowledge:

What are the functions of different parts of flowering plants?

What do plants need to grow well?

How is water transported in plants?

What are the different parts of a flower called?

What role does a flower have in pollination and fertilisation?

What are the stages of the life cycle of a flowering plant?

How do we know if something can be defined as a 'living organism'?

What is Sexual Reproduction in Flowering Plants?

What is Asexual reproduction in plants?

Light – Key knowledge:

How do we see things?

What is darkness?

How can we protect our eyes?

What happens when light reflects off a mirror or other reflective surfaces?

How are shadows formed?

What might cause the shadows to change?

What happens to shadows when the light source moves or the distance between the light source and the object changes?

What happens when the light from a light source is blocked by an opaque object?

Curriculum revisits:

The Summer 2 Term is also used to recap/revisit the learning from the whole year. There will be a mixture of lessons that ensure knowledge is embedded and that there is new learning that will take them deeper into the expeditions covered so far. This term we will be recapping areas that each pupil has experienced during this year's journey. They will have time each week to go over the parts they have forgotten and gather information that will help reinforce their learning.

Our previous expeditions for this academic year have been:

Autumn 1 - OTHER COUNTRIES (Geography) TOPIC: Natural Disasters

Autumn 2 - HISTORY IN THE UK (History) TOPIC: The Anglo Saxons

Spring 1 - UNDERSTANDING OUR WORLD AND BEYOND (Science) TOPIC: Earth and Space

Spring 2 - HUMAN INGENUITY (Science) TOPIC: Human Ingenuity – Electricity and Inventions

Summer 1 - GREAT CIVILISATIONS (History) TOPIC: The Romans